



Upper Occoquan Service Authority

Leader in Water Reclamation and Reuse

14631 COMPTON ROAD, CENTREVILLE, VIRGINIA 20121-2506
(703) 830-2200

May 2, 2022

TO ALL IFB RECIPIENTS:

For UOSA IFB 22-15 Building I Roof Replacement

SUBJECT: Addendum # 1

The above numbered solicitation is amended as set forth below. The hour and date specified for receipt of offers:

is not extended

is extended

OFFERORS MUST ACKNOWLEDGE receipt of this Addendum by one of the following methods:

- a. By acknowledgement of this Addendum on Submission Form submitted with the proposal;
- b. By referencing its receipt in your Transmittal Letter

If by virtue of this Addendum you desire to change a proposal already submitted, such change may be made by letter, provided it includes reference to the solicitation and this Addendum and is received prior to the due hour and date specified.

DESCRIPTION OF ADDENDUM:

The purpose of this addendum is to provide answers to questions received prior to the deadline for questions and provide correction to Section 1.10 of the IFB.

A. Correct Sub-paragraphs 5 and 8 as shown:

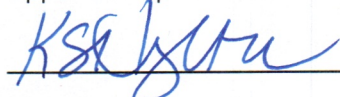
5. Project Schedule as described in 1.14 below
8. A list of five (5) references as described in 1.13 below

B. Per only written question received, and as discussed as pre-bid meeting, drawings for Building I are attached as Attachment A to this Addendum.

All other Terms, Conditions, Tables, Charts and Specifications, and Drawings not otherwise changed remain as originally stated or as shown.

ISSUED BY:

Upper Occoquan Service Authority

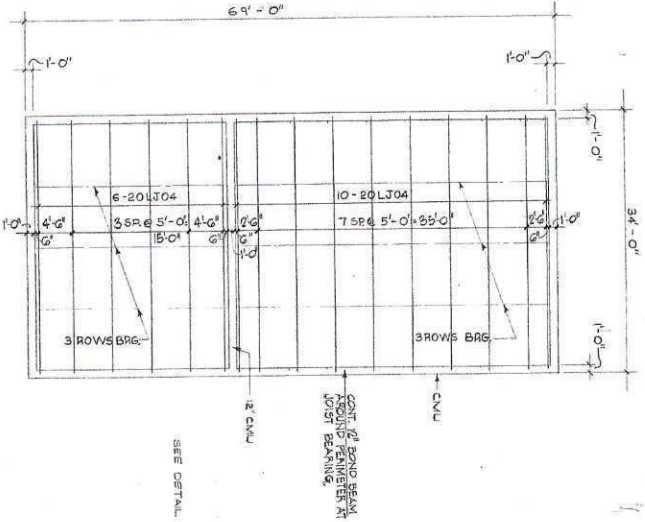


5/2/22
Date

ATTACHMENT A to Addendum #1

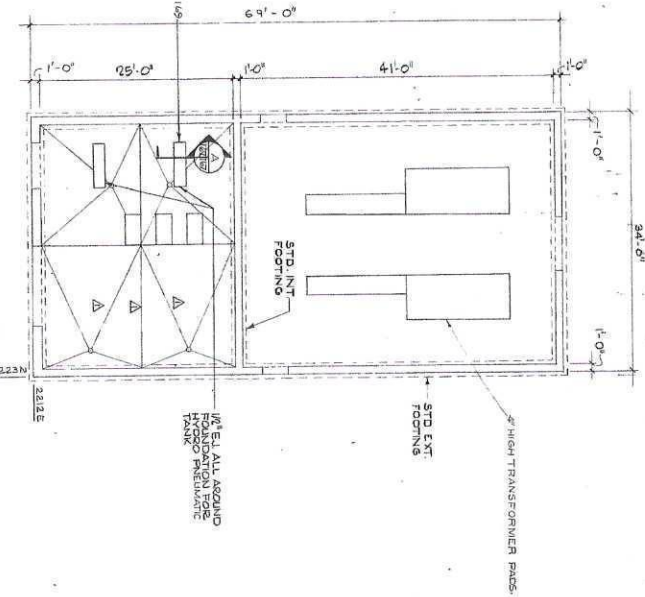
IFB 22-15

BUILDING I DRAWINGS



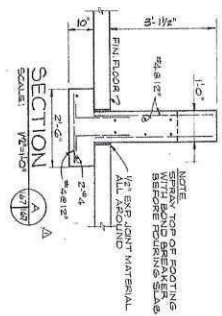
ROOF FRAMING PLAN

- SCALE: 1/8" = 1'-0"
1. JOIST BEARING AT ELEVATION 200'-0"
 2. ROOF DECK TO BE IN PLACE
 3. SEE ARCH. MECH. DWG. FOR SIZE & LOCATION OF ROOF DRAINS
 4. SEE SHIT 149 FOR ROOF DRAINS.



FOUNDATION PLAN

- SCALE: 1/8" = 1'-0"
1. FINISHED FLOOR ELEVATION AT H.P. = 200'-5"
 2. EL. OF DRAINS, L.S. TO BE 1'-0" FROM FIN. FLOOR
 3. SEE ARCH. MECH. DWG. FOR SIZE & LOCATION OF FLOOR DRAINS
 4. SEE MECH. DWG. 149 FOR LOCATION OF FLOOR DRAINS
 5. SEE ARCH. DWG. FOR EQUIP. PADS & FOUNDATION SIZES & LOCATIONS



APPROVED FOR RECORD DRAWING



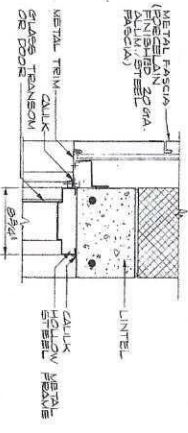
RECORD DRAWING

CHM HILL
 HOWLAND MERRIFIELD
 ENGINEERS ARCHITECTS
 LYON-NOTTICHAM ASSOCIATES

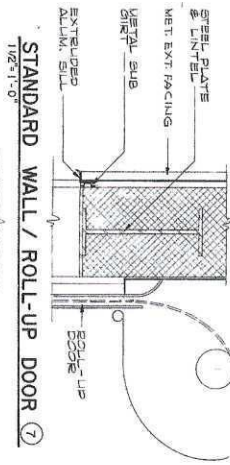
PHASE A 73-D-01
 UPPER ACCQUAN SEWAGE AUTHORITY
 REGIONAL WATER RECLAMATION PROJECT
 AND LC NO. 3-BLDG. I
 STRUCTURAL

DATE: 1/27/78
 DRAWN BY: M.J.
 CHECKED BY: S.W.
 SCALE: AS SHOWN

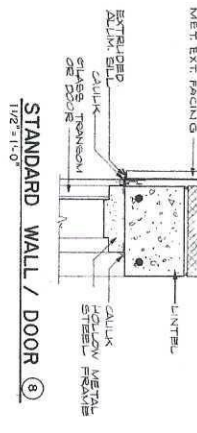
METAL EXTERIOR FACING & METAL FASCIA



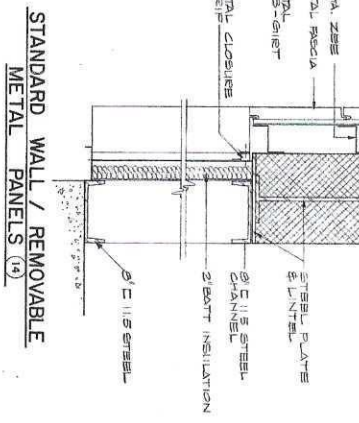
STANDARD WALL / DOOR (6)
1 1/2\"/>



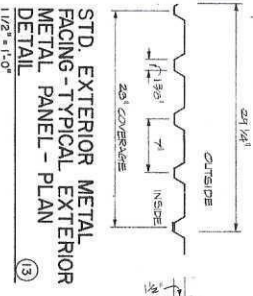
STANDARD WALL / ROLL-UP DOOR (7)
1 1/2\"/>



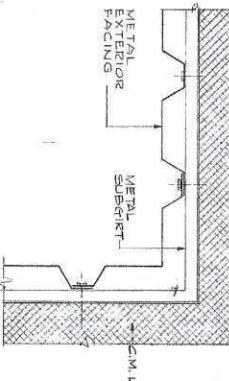
STANDARD WALL / DOOR (8)
1 1/2\"/>



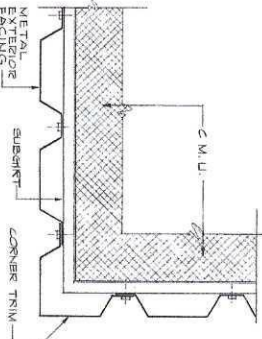
STANDARD WALL / REMOVABLE METAL PANELS (14)
1 1/2\"/>



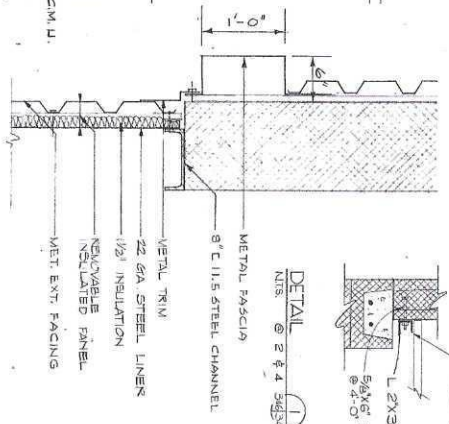
STD. EXTERIOR METAL FACING - TYPICAL EXTERIOR METAL PANEL - PLAN (13)
1 1/2\"/>



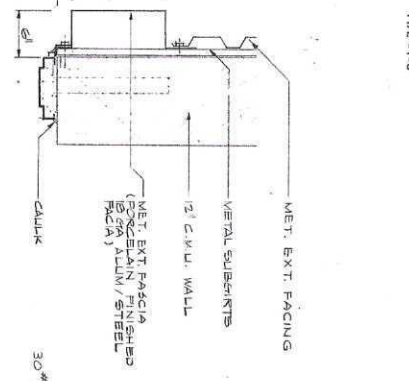
STANDARD INTERIOR CORNER (9)
3\"/>



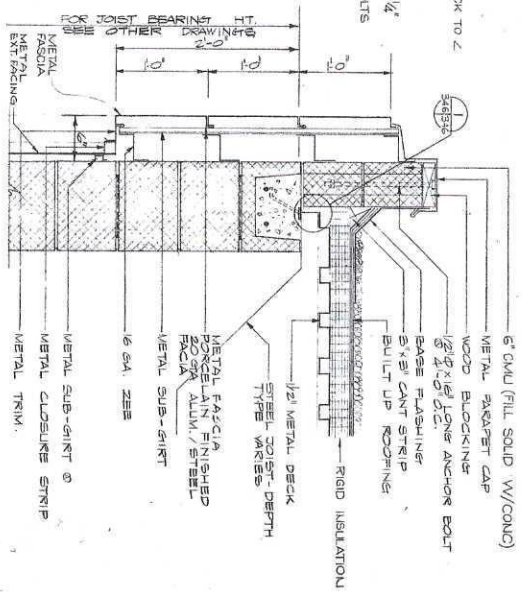
STANDARD EXTERIOR CORNER (10)
3\"/>



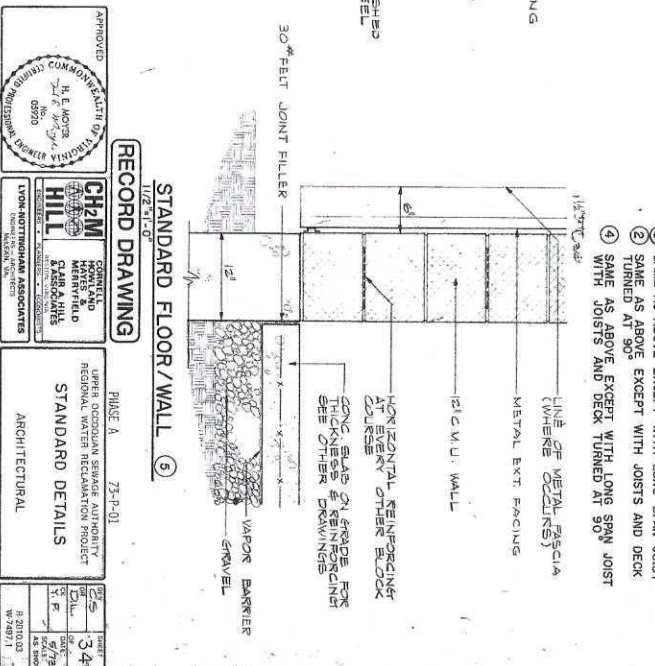
STANDARD REMOVABLE INSULATED METAL PANEL - PLAN DETAIL (12)
1 1/2\"/>



STANDARD DOOR JAMB (11)
1 1/2\"/>



STANDARD ROOF / WALL (1)
1 1/2\"/>



STANDARD FLOOR / WALL (5)
1 1/2\"/>

APPROVED COMMONWEALTH OF VIRGINIA
H. E. MOSE
REGISTERED PROFESSIONAL ARCHITECT
0070

RECORD DRAWING

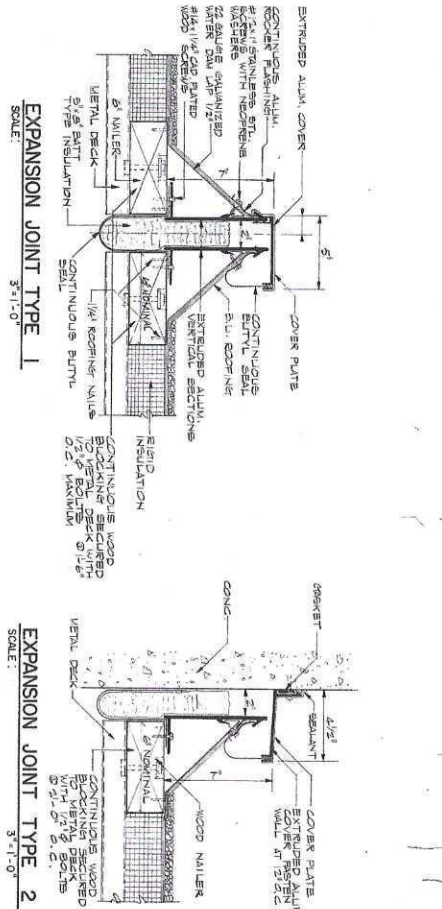
CH2M HILL
CONSULTANTS
3400 MERRIFIELD BLVD
ARLINGTON, VA 22204
L'VOY NOTTINGHAM ASSOCIATES
ARCHITECTURAL

PHASE A 75-P-01

JAMES OCCOQUAN SEARGE AUTHORITY
REGIONAL WATER RECLAMATION PROJECT
STANDARD DETAILS

DATE	3/4/96
BY	JRM
CHK'D	WJW
DATE	8/7/96
DATE	8/20/03
SCALE	AS SHOWN
PROJECT	W-2987.1

STANDARD ROOF DETAILS

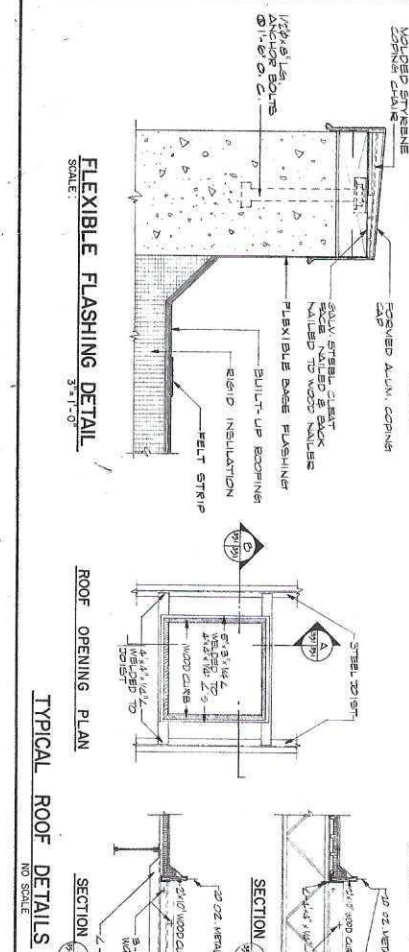


ROOF HATCH DETAIL
SCALE: 1/2"=1'-0"

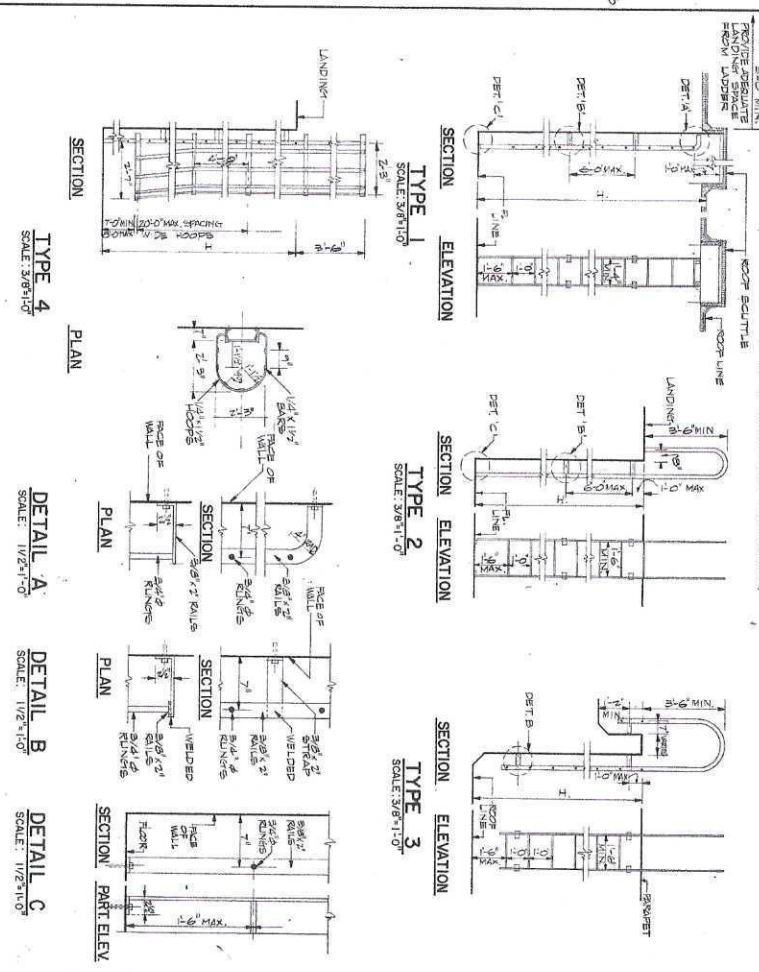
ROOF DRAIN DETAIL
NO SCALE

FLEXIBLE FLASHING DETAIL
SCALE: 3/8"=1'-0"

TYPICAL ROOF DETAILS
NO SCALE



STANDARD STEEL LADDERS
(GALVANIZE AFTER FABRICATION)



RECORD DRAWING

APPROVED: [Stamp]

CH2M HILL CONSULTANTS

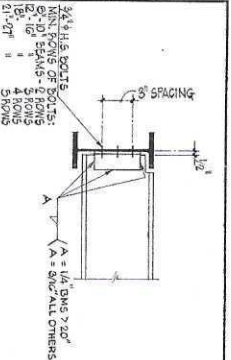
PHASE A 72-P-01

STANDARD DETAILS ARCHITECTURAL

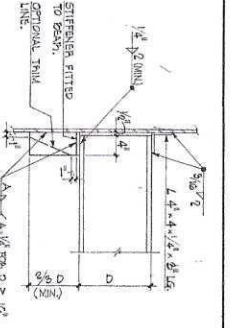
DATE: 5/73

BY: [Signature]

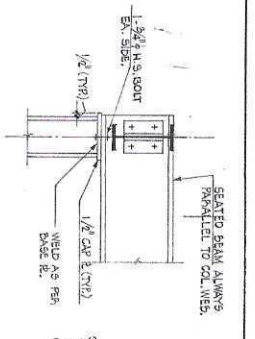
351



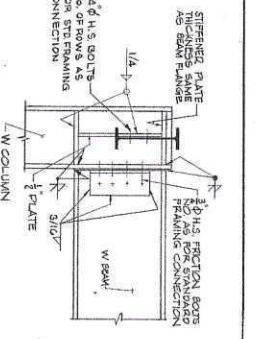
STANDARD FRAMING CONNECTION



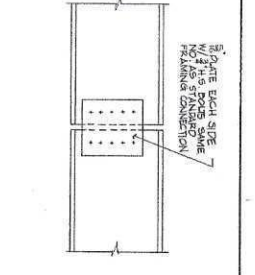
STANDARD BEAM TO COLUMN WEB



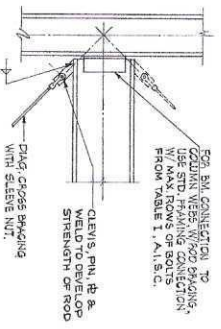
STANDARD COLUMN CAP PLATE



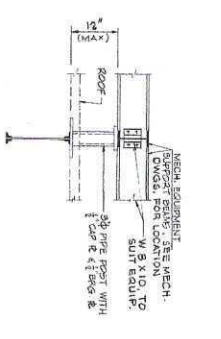
STANDARD RIGID CONNECTION



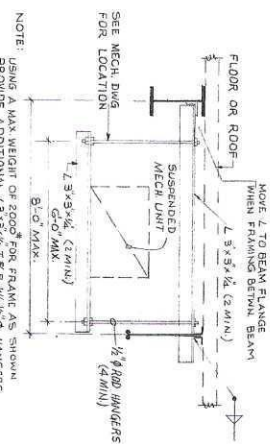
STANDARD SHEAR CONNECTION



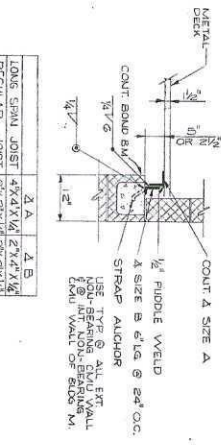
STANDARD DIAGONAL ROD BRACING CONNECTION



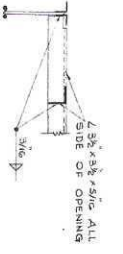
STANDARD MECH. EQUIP. SUPPORT



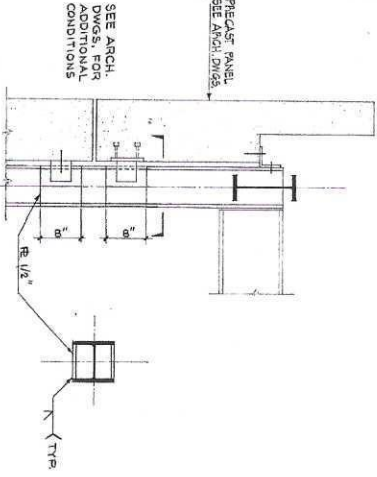
SUSPENDED MECH. EQUIP. SUPPORT.



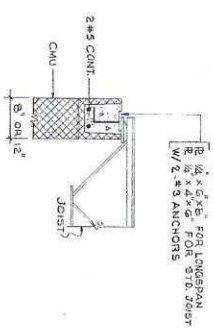
STANDARD DECK TO WALL CONNECTION



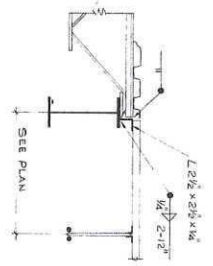
STD. ROOF OPENING DETAIL



TYPE PRECAST CONNECTION AT COLUMN



STANDARD BOND BEAM DETAIL



STANDARD DETAIL

PROVIDE L INDICATED TO SUPPORT METAL DECK @ JOIST SPAN



RECORD DRAWING

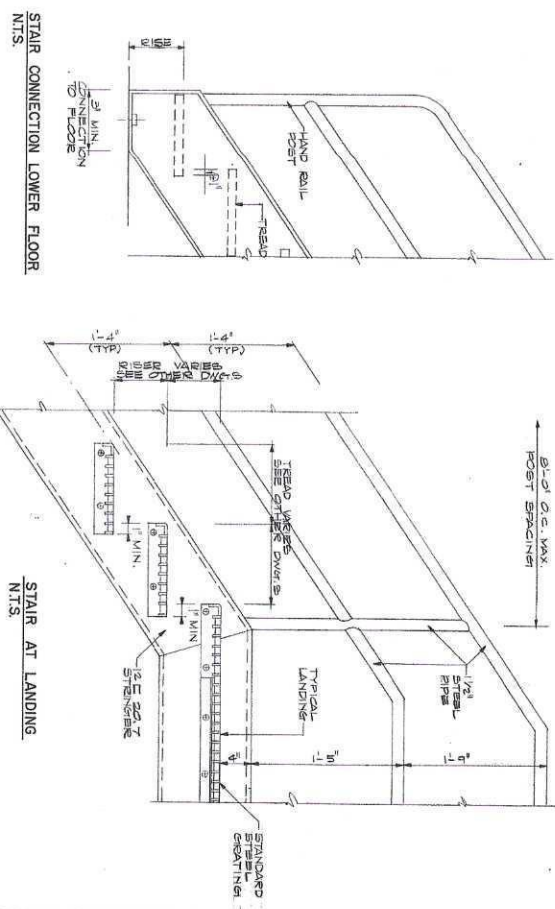
CH2M HILL
 CONSULTING ENGINEERS
 1000 NORTHVALE DRIVE
 FARMINGTON, VT 05445
 802-253-1410

PHASE A
 72-B-01
 UPMER GEOGRAPHICAL SERVICE AUTHORITY
 RESIDENTIAL WATER RECLAMATION PROJECT
STANDARD DETAILS
 STRUCTURAL

DATE	3/6
BY	GMB
CHECKED	MMZ
DATE	5/73
PROJECT	RESIDENTIAL WATER RECLAMATION PROJECT
DRAWING NO.	R-2010-03
WORK SHEET NO.	W3871

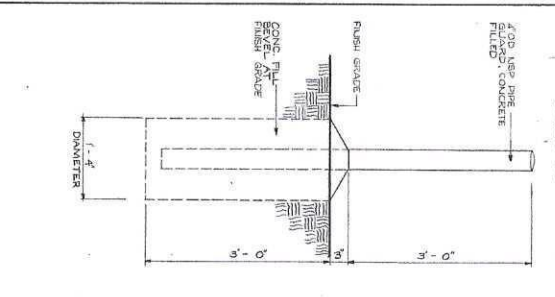
STANDARD STEEL STAIR

GALVANIZE AFTER FABRICATION



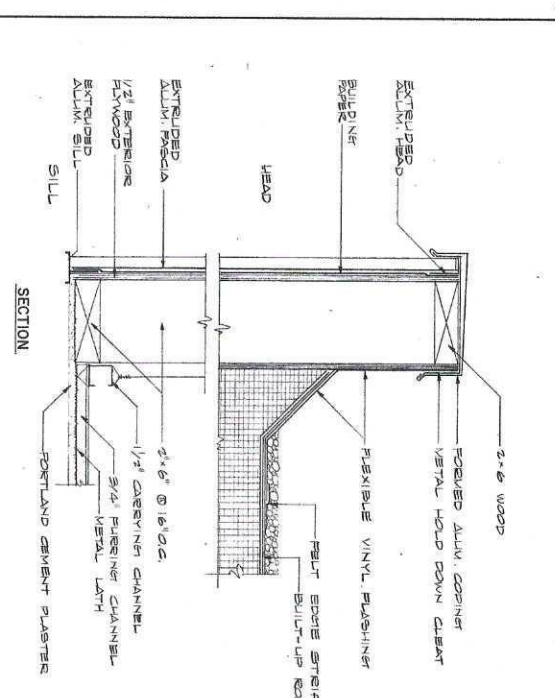
STANDARD PIPE GUARD

SCALE: 1" = 1'-0"



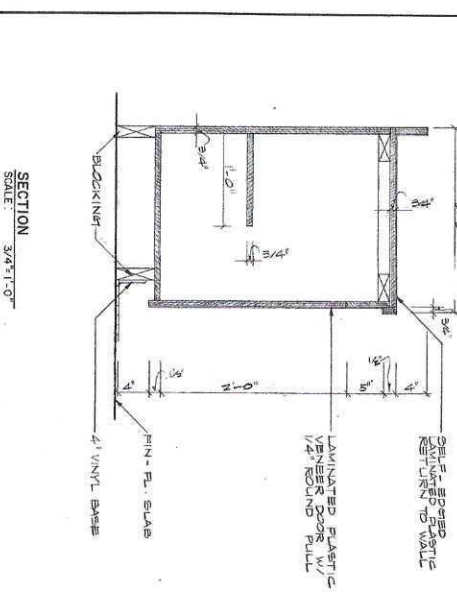
STANDARD RIBBED EXTRUDED ALUMINUM FASCIA

SCALE: 3/4" = 1'-0"



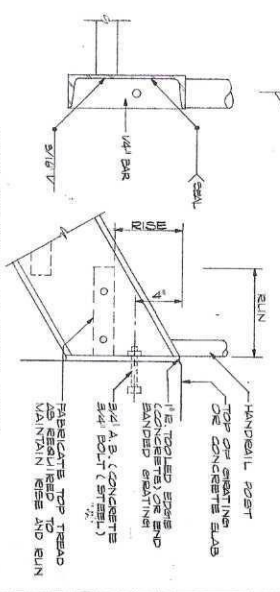
STANDARD COUNTER

SCALE AS SHOWN



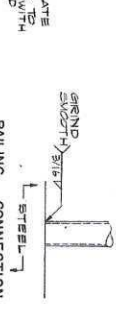
STAIR AT LANDING

N.T.S.



STAIR CONNECTION TO UPPER FLOOR

N.T.S.



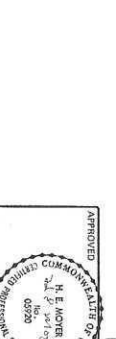
RAILING CONNECTION TO STEEL STRINGER

N.T.S.



RAILING CONNECTION TO WALL

N.T.S.



RECORD DRAWING

APPROVED
 H. E. MOYER
 CHIEF ENGINEER
 ST. LOUIS, MO.
 0320

CH2M HILL
 CONSULTING ENGINEERS
 1700 MARKET STREET
 ST. LOUIS, MO. 63103

PHASE A
 73-P-01
 UPPER OCCOUGAN SEWAGE AUTHORITY
 REGIONAL WATER RECLAMATION PROJECT
 STANDARD DETAILS
 ARCHITECTURAL

DATE	3/25
BY	K.P.
SCALE	3/4" = 1'-0"
AS SHOWN	AS SHOWN
PROJECT NO.	73-P-01
DATE	3/25